

## Fundamentals:

Hong Kong stocks surged on Wednesday after trading was halted in the afternoon because of a typhoon alert. Traders continued to assess China's reopening speculation while shrugging off the prospect of further interest-rate increases by the Federal Reserve.

The Hang Seng Index closed 2.4 per cent higher at 15,827.17, extending the 5.2 per cent gain on Tuesday. The Hong Kong stock exchange suspended trading at 1.55pm, after the observatory issued the No 8 typhoon warning as Severe Tropical Storm Nalgae neared. The Hang Seng Tech Index gained 2.7 per cent, while the Shanghai Composite Index added 1 per cent.

All but four of the 73 index members advanced. Alibaba Group Holding rose 2 per cent to HK\$67.40. Tencent Holdings gained 1.4 per cent to HK\$230.60 and BYD added 4 per cent to HK\$190.90. Macau casino operators surged, with Sands China soaring 12 per cent to HK\$17.12 and Galaxy Entertainment adding 6.7 per cent to HK\$41.60. The surge followed a report that more Chinese cities are adopting inhaled vaccines, prompting speculation that China will relax its zero Covid policy.

Beijing remains "fully focused" on economic growth and is committed to making Hong Kong an even stronger international financial center to help achieve that goal, China's top financial regulators said during the Global Financial Leaders' Investment Summit on Wednesday.

More than 200 international and regional leaders from around 120 global financial institutions are now in the city to attend the summit. "Hong Kong is back" and banks should "get in front" of the queue for business, Chief Executive John Lee Ka-chiu said in his opening speech.

Adding to the positive sentiment, Swiss bank Julius Baer said it will expand its Hong Kong office to use the city as a hub for wealth management and family office businesses in China and other Asian markets, according to its global chief. Citigroup also plans to expand its wealth management center in the city.

Elsewhere, the Fed is set to extend its policy lift-off with another 75-basis-point increase later tonight, after a US employment report on Tuesday showed the labour market is still strong.

The Hong Kong Monetary Authority (HKMA) is expected to follow suit and raise its base rate by the same amount, taking it to the highest since 2008, increasing the pressure on the local economy. The city's gross domestic product shrank by 4.5 per cent in the third quarter, as banks raised their prime rate, choking demand.

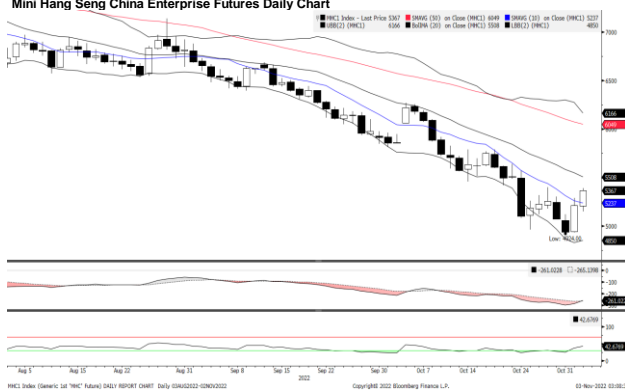
Asian stocks were flat. The Nikkei 225 in Japan and Kospi in South Korea were little changed, while the benchmark index in Australia rose 0.1 per cent.

(Source: South China Morning Post)

## Mini Hang Seng Futures Daily Chart



## Mini Hang Seng China Enterprise Futures Daily Chart



Contracts	Chg	Sett	High	Low
H. SENG FUT NOV 22	374	15830	15888	15284
H. SENG FUT DEC 22	379	15896	15938	15350
H. SENG FUT MAR 23	382	16002	16034	15505
H. SENG FUT JUN 23	387	15910	15930	15579
MINI H. SENG FUT NOV 22	374	15830	15888	15284
MINI H. SENG FUT DEC 22	379	15886	15938	15340
MINI H. SENG FUT MAR 23	382	16002	16052	15450
MINI H. SENG FUT JUN 23	387	15910	15920	15400
HSCEI FUT NOV 22	154	5367	5389	5150
HSCEI FUT DEC 22	148	5385	5408	5177
HSCEI FUT MAR 23	158	5463	5362	5278
HSCEI FUT JUN 23	158	5441	5420	5420
MINI HSCEI FUT NOV 22	154	5367	5389	5150
MINI HSCEI FUT DEC 22	148	5385	5410	5179
MINI HSCEI FUT MAR 23	158	5463	5475	5249
MINI HSCEI FUT JUN 23	158	5441	5445	5308

Major HSI Constituent Stocks	Close	Change	High	Low
*AIA Group Ltd	63.9	0.5	64.9	62.55
**Tencent Holdings Ltd	230.6	3.2	232	220
*HSBC Holdings PLC	41.4	0.35	41.5	40.7
**China Construction Bank Corp	4.25	0.07	4.29	4.12
**Ping An Insurance Group	33.3	0.45	33.5	32.05
**Meituan	146.7	7.1	149	134.7
*Hong Kong Exchanges & Clearing Ltd	236.2	9.8	238	220.4
**Alibaba Group Holdings Ltd	67.4	1.3	68	64.15
**Xiaomi Corp	9.36	0.11	9.45	9.09
**ICBC	3.49	0.07	3.5	3.37

Major HSCEI Constituent Stocks	Close	Change	High	Low
*Wuxi Biologics Cayman Inc	39.9	1.95	40.4	37
**China Mobile Ltd	48.1	0.7	48.5	47.05
**Bank of China Ltd	2.55	0	2.57	2.51
*Techtronic Industries Co Ltd	77.7	-0.8	78.5	75.9
*CK Hutchison Holdings Ltd	40.2	0.95	40.8	38.8
*Link REIT	49.3	1.4	49.9	47.65
*CLP Holding Ltd	55.55	1.8	55.75	52.85
**Geely Automobile Holdings Ltd	9.49	0.47	9.53	8.84
**CNOOC Ltd	9.88	0.21	9.92	9.59
**ANTA Sports Products Ltd	76.8	3.4	77.2	70.5

Global Equity Indices	Close	Change	High	Low
Hang Seng	15827.17	371.9	15867.2	15276.76
HSCEI	5355.03	145.43	5374.93	5137.29
Shanghai Comp Index	3003.37	34.171	3019.05	2954.948
Nikkei 225	27663.4	-15.53	27692.6	27546.88
KOSPI	2336.87	1.65	2346.32	2323.37
S&P/ASX200	6986.66	9.802	7011.7	6976.9
DJIA	32147.8	-505.44	33071.9	32139.77
S&P 500	3759.69	-96.41	3894.44	3758.68
NASDAQ	10524.8	-366.05	10993.2	10522.9
DAX	13256.7	-82	13398.6	13255.07
CAC	6276.88	-0.81	6376.29	6273.55
FTSE100	7144.14	-42.02	7205.07	7130.5

## Technical Analysis

### Mini Hang Seng

1st Resistance:	16067	2nd Resistance:	16305
1st Support:	15593	2nd Support:	15355
MACD:	-715.883		
MACD DIFF:	17.9317		
RSI:	42.6224		

### Mini Hang Seng China Enterprise

1st Resistance:	5448	2nd Resistance:	5528
1st Support:	5286	2nd Support:	5206
MACD:	-261.038		
MACD DIFF:	4.124		
RSI:	42.6716		

## Strategy:

Mini Hang Seng:	Long: Profit target:	Stop-loss:	Long: Profit target:	Stop-loss:
	15593	15748	15515	15355
	15509	15278		

Mini Hang Seng:	Short: Profit target:	Stop-loss:	Short: Profit target:	Stop-loss:
	16067	15907	16148	16386
	16305	16142		

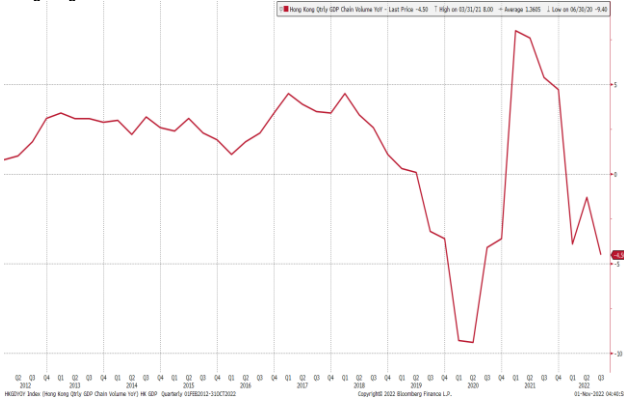
Mini Hang Seng China Enterprise:	Long: Profit target:	Stop-loss:	Long: Profit target:	Stop-loss:
	5286	5339	5260	5206
	5258	5180		

Mini Hang Seng China Enterprise:	Short: Profit target:	Stop-loss:	Short: Profit target:	Stop-loss:
	5448	5393	5475	5556
	5528	5473		

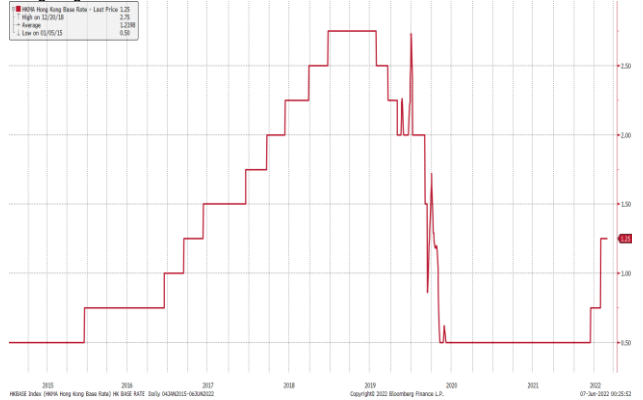
Hong Kong Economic Releases		Period	Survey	Actual	Prior	Revised
11/03/2022 08:30	S&P Global Hong Kong PMI	Oct	--	--	48	--
11/07/2022	Foreign Reserves	Oct	--	--	\$419.2b	--

China Economic Releases		Period	Survey	Actual	Prior	Revised
11/03/2022 09:45	Caixin China PMI Composite	Oct	--	--	48.5	--
11/03/2022 09:45	Caixin China PMI Services	Oct	49	--	49.3	--
11/04/2022	BoP Current Account Balance	3Q P	--	--	\$77.5b	--
11/07/2022	Foreign Reserves	Oct	\$3029.50b	--	\$3028.96b	--
11/07/2022	Exports YoY	Oct	4.30%	--	5.70%	--
11/07/2022	Imports YoY	Oct	0.00%	--	0.30%	--
11/07/2022	Trade Balance	Oct	\$95.97b	--	\$84.74b	--
11/07/2022	Exports YoY CNY	Oct	12.70%	--	10.70%	--
11/07/2022	Imports YoY CNY	Oct	10.00%	--	5.20%	--
11/07/2022	Trade Balance CNY	Oct	702.90b	--	573.57b	--

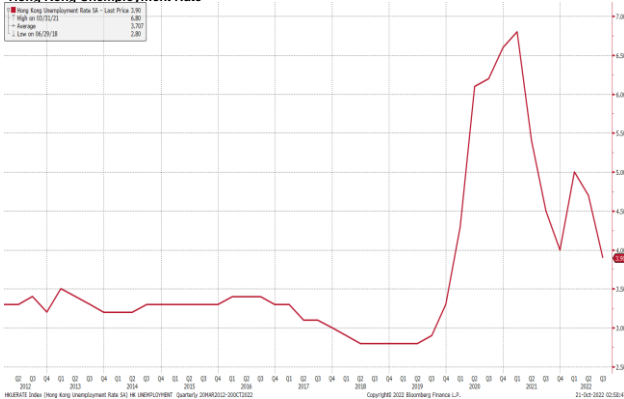
### Hong Kong GDP Q on Q



### Hong Kong Base Interest Rate



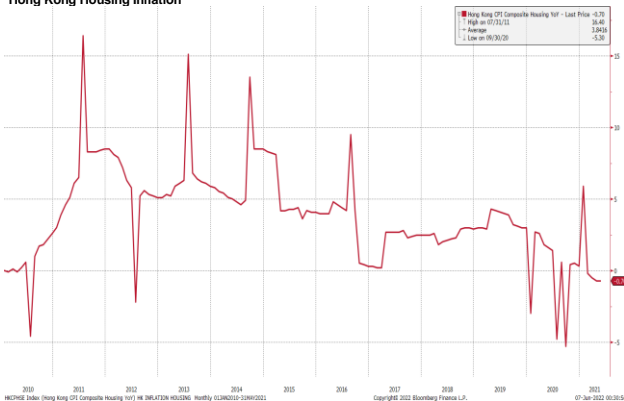
### Hong Kong Unemployment Rate



### Hong Kong Composite Inflation



### Hong Kong Housing Inflation



### Hong Kong Retail Sale Value Y on Y %



(Source: Bloomberg)

Kenanga Futures Sdn Bhd (353603-X)

Dealing Desk: (603) 2172 3820 Fax: (603) 2172 2729 Email: futures@kenanga.com.my

Disclaimer: This document has been prepared for general circulation based on information obtained from sources believed to be reliable but we do not make any representations as to its accuracy or completeness.

Any recommendation contained in this document does not have regard to the specific investment objectives, financial background and the particular needs of any person who may read this document.

This document is for the information of addressees only and is not to be taken in substitution for the exercise of judgement and assessment by addressees in relation to any investment decision.

Kenanga Futures Sdn Bhd accepts no liability whatsoever for any direct or consequential loss arising from any use of this document or any solicitations of an offer to buy or sell any securities/underlying securities.

Kenanga Futures Sdn Bhd and its associates, their directors, and/or employees may have positions in, and may effect transactions in securities/underlying securities mentioned herein from time to time in the open market or otherwise,

and may receive brokerage fees or act as principal or agent in dealings with respect to these companies.